

MRL Passenger Elevator

Hoistway Structure

Concrete Brick & Concrete Other

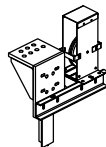
Unstandard Standard

NOTE

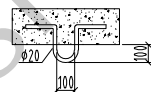
Technical Requirement:

HW	HOISTWAY WIDTH	CW	CAR INSIDE WIDTH	Type	TKJW 1350 / 1.0 -VF		
HD	HOISTWAY DEPTH	CD	CAR INSIDE DEPTH	F/P/D	/ /	Door type	Center open
OP	DOOR OPENING WIDTH	CH	CAR HEIGHT	load	1350	kg	speed 1.0 m/s
ROP	WALL OPENING WIDTH	MRW	MACHINE ROOM WIDTH	Machine	MONA4.00	Roping	2:1
OPH	DOOR OPENING HEIGHT	MRD	MACHINE ROOM DEPTH	T/sheave	∅ 320	D/sheave	∅
OH	OVERHEAD HEIGHT	MRF	MACHINE ROOM HEIGHT	car sheave	∅ 320	CW sheave	∅ 320
CAR DBG	DISTANCE BETWEEN CAR GUIDE RAILS			Shaft	HW 2500	mm x HD 2200	mm
CWT DBG	DISTANCE BETWEEN COUNTERWEIGHT GUIDE RAILS			Cabin	CW 1700	mm x CD 1800	mm
				Door	OP 1100	mm x OPH 2100	mm

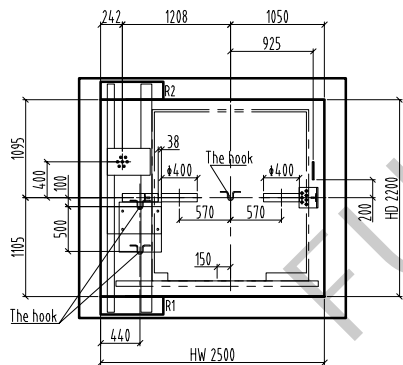
Compact type



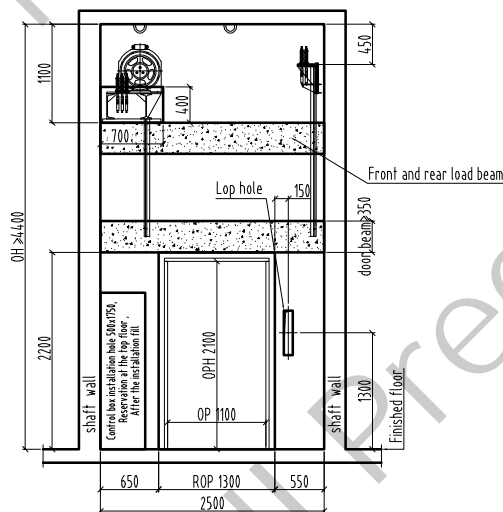
Speed limiter base detail



The hook

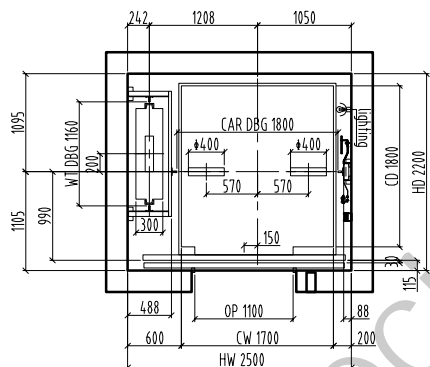


Overhead plan/1:60

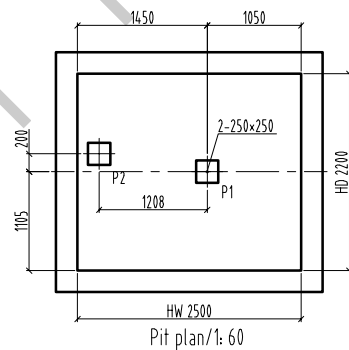


E/reserved hole/1: 60

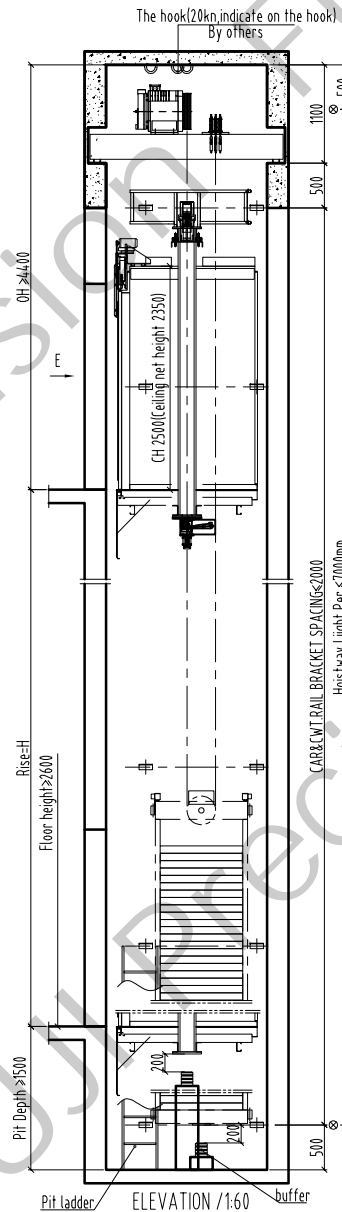
Bottom box Lop: 100x500 (base station) 100x400 (remaining stations)
No bottom box Lop hole: ∅50 hole



Hoistway plan/1:60



Pit plan/1: 60



The hook(20kn indicate on the hook) By others

OH	>=4400
Rise	H
26 F	
25 F	
24 F	
23 F	
22 F	
21 F	
20 F	
19 F	
18 F	
17 F	
16 F	
15 F	
14 F	
13 F	
12 F	
11 F	
10 F	
9 F	
8 F	
7 F	
6 F	
5 F	
4 F	
3 F	
2 F	
1 F	
G F	
B F	
Pit	>=1500
Floor	Height

Drawing	approver
Drawing No.	FTKW 1350 -01-
manufacturing no.	
Project name	

FUJI PRECISION